

# DXR500L

## Direct Radiography

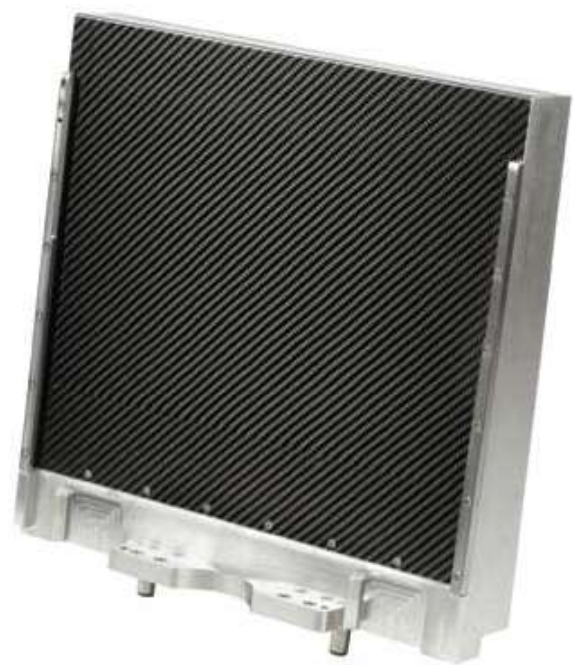
Designed for industrial use, the DXR500L provides the highest image quality in a rugged production environment. The DXR500L allows for easy detection of subtle indications. Utilizing Endurance™ technology, developed specifically to reduce radiation wear out and to maximize cost savings. GE Sensing & Inspection Technologies detectors incorporate a temperature controller, allowing for longer calibration intervals and quick, consistent images. DXR500L provides application results efficiently with a cycle time reduction.

### Features and Benefits

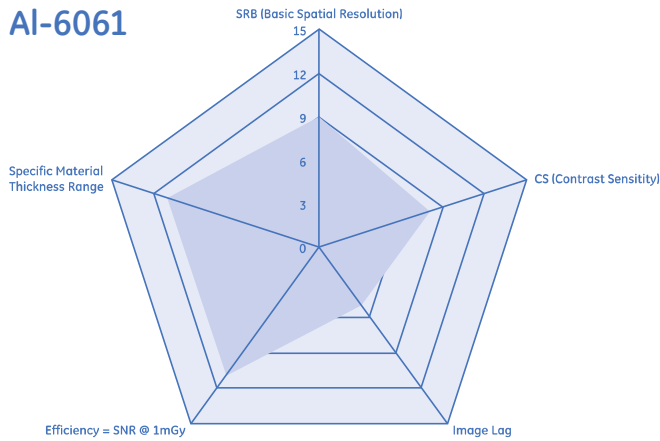
- High-resolution images for easy detection of subtle indications
- Endurance™ scintillator technology reduces radiation wear out
- Temperature controlled for stable offsets over longer periods, enabling more consistent imaging and fewer calibrations

### Applications

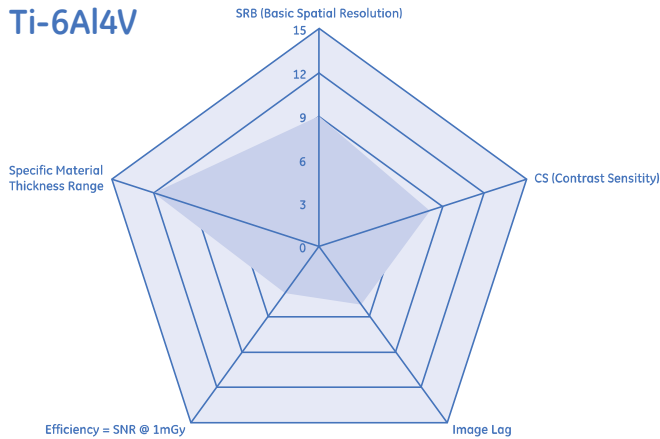
- Aerospace investment castings
- Industrial gas turbine investment castings
- Wax and ceramic patterns
- Metrology
- Materials science/geology



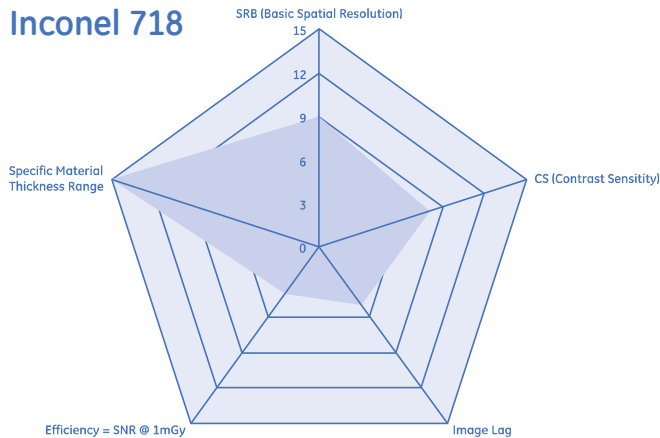
## Al-6061



## Ti-6Al4V



## Inconel 718



## Detector Characterization Charts

The detector characterization charts provided on the left are completed in accordance to ASTM E2507-07 Standard Practice for the Manufacturing Characterization of Digital Detector Arrays. This standard allows for the direct comparison of DDAs by ensuring data is collected and reported in a consistent and specified manner. The standard also enables guidance for the appropriate pairings of detectors with applications.

Pixels are identified as bad per one or more of the seven definitions described in the ASTM E2597-07 document. The pixels marked as bad will be corrected through GE's software utilizing data collected from good neighborhood pixels.

## Technical Specifications

### Detector Specifications

Flat Panel Type	Amorphous Silicon
Scintillator Material	CsI
Active Area (approx.)	307 x 240 mm (12 x 9 in)
Image Format	3072x2400
Pixel Pitch	100µm
A/D Conversion	14 bits
Minimum Exposure Time	375ms
Interface	Gigabit Ethernet
Dynamic Range	10,000:1
Dimensions	356 x 360 x 122.5mm
Weight	15 kg (33 lb)
Operating Temperature	10° to 35° C (50° to 95° F)
Operating Humidity	10-90% non-condensing

### Power Supply

Voltage	100-240V, 50-60Hz
UT Output Connector	163 x 287 x 56 mm (6 x 11 x 2 in)
Weight	3 kg (7 lb)

### Temperature Controller

Voltage	100-240V, 50-60Hz
Dimensions	220 x 286 x 382 mm (9 x 11 x 15 in)
Weight	8 kg (19 lb)



[www.gesensinginspection.com](http://www.gesensinginspection.com)

GEIT-40045EN (11/09)